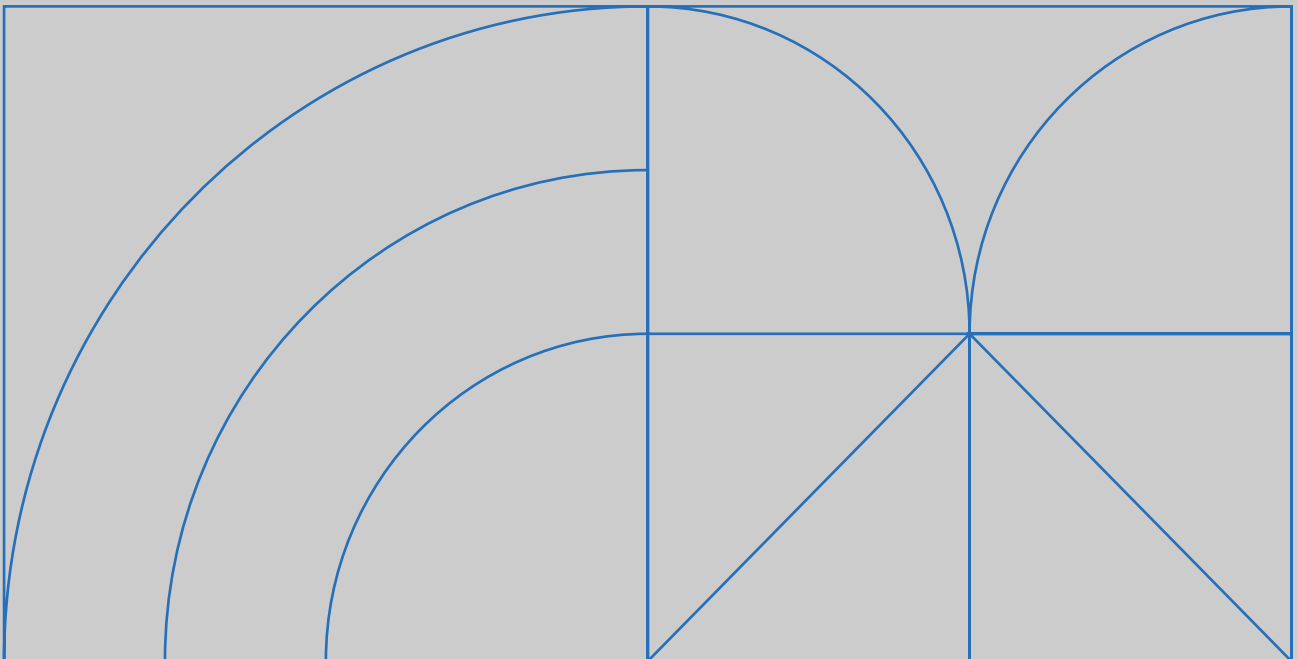




RED SEA Company Profile





RED SEA
PIPES & FITTINGS

RED SEA PIPES SYSTEMS



Guide

Company Profile

01

Systems - Infrastructure

05

System - Building

22

System - irrigation

39

Company Profile

Red Sea Pipes is a leading brand in plastic pipes and fittings and a key stakeholder in all the region’s major infrastructure and real-estate projects. RSP is renowned for its enormous production capacity reaching 150,000 ton/year, products portfolio exceeding 8000 products, as well as its ready-to-ship strategy having ready products exceeding 20,000 tons at any moment in time.

RSP has been always leading in introducing not just new systems and products to the region, but also new technologies including Industry 4.0 and digitization of the production process. In addition, it has been one of the first to introduce CNC machines for fittings and automated pipe perforation, supplying various projects around the world.

6

PRODUCTION FACILITIES

75+

PRODUCTION LINES

27

UNIQUE SYSTEMS

500+

CONSULTANTS APPROVALS

8K+

DIFFERENT PRODUCTS

150K+

CAPACITY TON / YEAR

More than 800 team members are one of the greatest assets for RSP. Production is managed and executed by the highest calibers in the region maintaining a world-class quality approved and accredited internationally. Thanks to the team experience and high technical skills, RSP is leading the fabrication and special products for both HDPE and UPVC supporting clients and partners around the world.

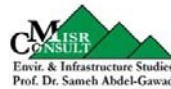


Partners

DEVELOPERS



CONSULTANTS

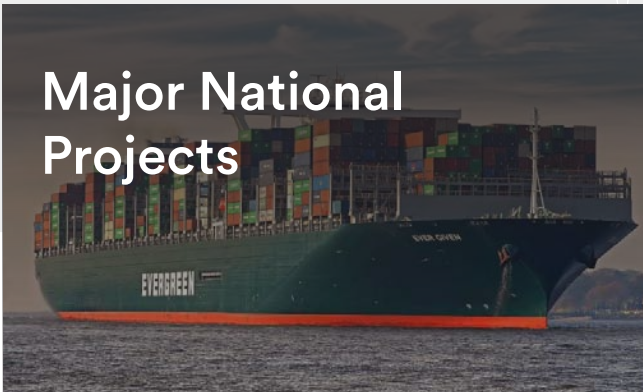


CONSTRUCTION



Red Sea Pipes is proudly one of the main suppliers for rebuilding Egypt in partnership with the top consultants, construction companies and developers.

Major National Projects



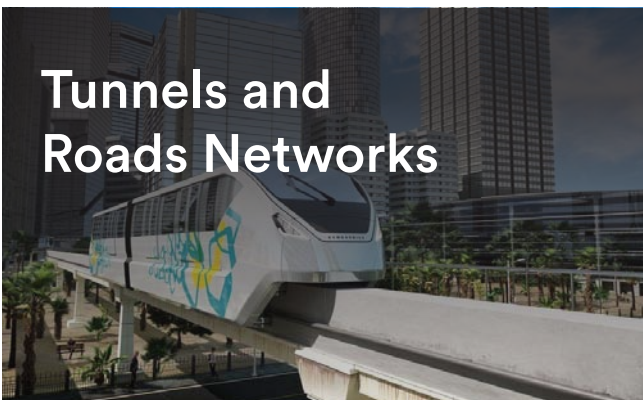
Projects include New Suez Canal, Toshka major agriculture initiative, Delta agriculture project, and Dabaa nuclear plant (NPPA)

New Urban Communities



Projects include El-Alamein, Al Galala, New Mansoura, New Aswan, New Damietta, and New Ismailia Cities

Tunnels and Roads Networks



Projects include High Dam Railway Line, Egypt's Monorail , Greater Cairo Metro, and Ring Road.

New administrative Capital City



Projects include Residential District (R), CBD New Capital, and Central Park of New Capital

Red Sea Pipes contributes in major projects in the Middle East and Africa.

Market Leader in Libya & Iraq

Red Sea Pipes has been leading the plumbing market in Libya & Iraq and the surrounding countries for more than 20 years. Currently RSP is supporting the mega infrastructure projects in Libya & Iraq supplying HDPE and DWC products.

Internationally Funded Projects Sudan & Yemen

Thanks to RSP's world-class trusted quality and top materials, it's been supplying various projects in Sudan funded and audited by World Bank and United Nations. RSP continues to support the region for current and future real-estate and infrastructure projects.



Infrastructure

Pressurized High Density Polyethylene System	06
Pressurized UPVC -CPVC System	09
Double Wall Corrugate Polyethylene System	11
Electricity System	17
Sewage UPVC System	19

1 — Solid Wall HDPE Pipes & Fittings [DIN8074/8075]

HDPE pipe is used across the globe for applications such as water mains, gas mains, sewer mains, lines, rural irrigation, fire system supply lines, and others.



PE-100 Pipes



ITEM	VALUE
Size (OD)	20 -1600 mm
PRESSURE BAR	PN[6-8-10-12.5-16-20]
JOINTING	BUTT FUSION

Molded Fittings

Elbow 90°



Øe mm	Pressure Rating (Bar) SDR
50	SDR11- PN16
63	SDR11- PN16
75	SDR11- PN16
90	SDR11- PN16
110	SDR11- PN16
125	SDR11- PN16
140	SDR11- PN16
160	SDR11- PN16

Y -TEE



Øe mm	Pressure Rating (Bar) SDR
50	SDR11 - PN16
63	SDR11 - PN16
75	SDR11 - PN16
90	SDR11 - PN16
110	SDR11 - PN16

Elbow 45°



Øe mm	Pressure Rating (Bar) SDR
50	SDR11- PN16
63	SDR11- PN16
75	SDR11- PN16
90	SDR11- PN16
110	SDR11- PN16
125	SDR11- PN16
140	SDR11- PN16
160	SDR11- PN16

TEE



Øe mm	Pressure Rating (Bar) SDR
50	SDR11- PN16
63	SDR11- PN16
75	SDR11- PN16
90	SDR11- PN16
110	SDR11- PN16
125	SDR11- PN16
140	SDR11- PN16
160	SDR11- PN16

Reduced TEE



Øe mm	Pressure Rating (Bar) SDR
50	SDR11- PN16
63	SDR11- PN16
75	SDR11- PN16
90	SDR11- PN16
110	SDR11- PN16
125	SDR11- PN16
140	SDR11- PN16
160	SDR11- PN16

Flange Adaptor



Øe mm	A SDR11 mm
32	10
40	11
50	12
63	14
75	16
90	17
110	18
125	25
140	25
160	25
180	30
200	32
225	32
250	35
280	35
315	35

PE - Casing Flange



DN mm	Øe mm	number of holes	K mm
50	63	4	18
65	75	4	18
80	90	8	20
100	110	8	20
100	125	8	20
125	140	8	22
150	160	8	22
150	180	8	22
200	200	12	22
200	225	12	22
250	250	12	26
250	280	12	26
300	315	12	26

Reducer



Øe mm	A SDR11 mm
32	10
40	11
50	12
63	14
75	16
90	17
110	18
125	25
140	25
160	25
180	30
200	32
225	32
250	35
280	35
315	35

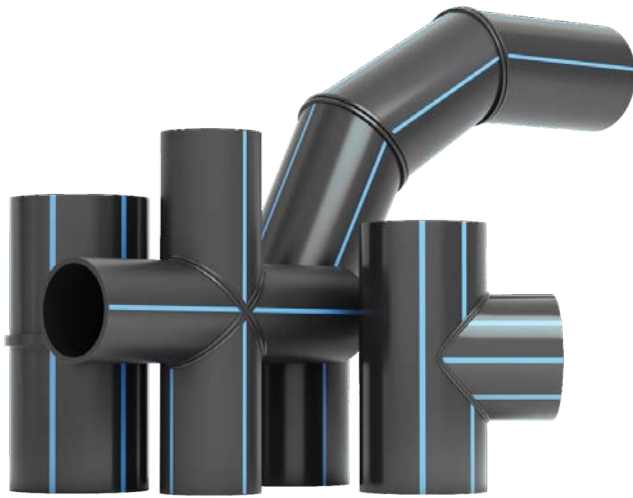
End Cap



Øe mm	A SDR11 mm
32	10
40	11
50	12
63	14
75	16
90	17
110	18
125	25
140	25
160	25
180	30
200	32
225	32
250	35
280	35
315	35

Fabrication Technology

Latest Fabrication Technology
Welding STD DVS- 2207 With High
Qualified Professionals



Material	PE100
Sizes (mm)	75-1600
Pressure Rating (Bar)	PN[6,10,16,20]
Fabrication STD	DIN16963
Pipe STD	DIN8074/8075
Welding STD	DVS 2207-1

PE Sub Drainage Pipe



Material	PE100
Sizes (mm)	OD 90 - 315 mm
Pressure Rating (Bar)	PN[6,10,16,20]
Perforation Angle	45 C- (-/+) 5
Min Distance Btw Holes	100 mm
Perforation Template	Contact us

PE Coils



PIPES	PE Pipes
Material	polyethylene
Sizes (mm)	20 - 110 mm
Coil Length	50/100 m

02 / 03 / 05 — Pressurized UPVC -CPVC Systems

UPVC - [DIN8061/62]

CPVC - [ASTM F441 - ASTM D1785]

UPVC plumbing pipes are widely used in buildings for distribution of potable water, or water transfer in bathrooms, kitchens, sink, laboratories, etc.

CPVC is a strong and rigid thermoplastic material that is used for hot and cold potable water applications in residential construction

MATERIAL	UPVC -CPVC
SIZES	[10-800] MM /1/2" - 2"
PRESSURE	PN6 - PN10 - PN16 SCH40 - SCH80
JOINTING	GASKET / SOLVENT CEMENT



Fittings - DIN8063

EL BOW 90°



Size mm	PN Bar
75	PN16
90	PN16
110	PN16
160	PN16
200	PN16

EL BOW 45°



Size mm	PN Bar
75	PN16
90	PN16
110	PN16
160	PN16
200	PN16

TEE



Size mm	PN Bar
75	PN16
90	PN16
110	PN16
160	PN16
200	PN16

REDUCER -TEE



Size mm	PN Bar
75	PN16
90	PN16
110	PN16
160	PN16
200	PN16

COUPLER



Size mm	PN Bar
75	PN16
90	PN16
110	PN16
160	PN16
200	PN16

REDUCING



Size mm	PN Bar
75	PN16
90	PN16
110	PN16
160	PN16
200	PN16

END CAP



Size mm	PN Bar
75	PN16
90	PN16
110	PN16
160	PN16
200	PN16

BUSH



Size mm	PN Bar
75	PN16
90	PN16
110	PN16
160	PN16
200	PN16

Fittings - ASTM D2467 - SCH80

EL BOW 90°



Size Inch	STD
½	ASTMD 2467
¾	ASTMD 2467
1"	ASTMD 2467
1 ¼"	ASTMD 2467
1 ½"	ASTMD 2467
2"	ASTMD 2467

EL BOW 45°



Size Inch	STD
½	ASTMD 2467
¾	ASTMD 2467
1"	ASTMD 2467
1 ¼"	ASTMD 2467
1 ½"	ASTMD 2467
2"	ASTMD 2467

FEMALE THREADED EL BOW 90°



Size Inch	STD
½	ASTMD 2467
¾	ASTMD 2467

TEE



Size / D	STD
½	ASTMD 2467
¾	ASTMD 2467
1"	ASTMD 2467
1 ¼"	ASTMD 2467
1 ½"	ASTMD 2467
63 mm	ASTMD 2467

TEE-THREADED



Size Inch	STD
½	ASTMD 2467
¾	ASTMD 2467

Y-TEE



Size Inch	STD
½	ASTMD 2467
¾	ASTMD 2467
1"	ASTMD 2467
1 ¼"	ASTMD 2467
1 ½"	ASTMD 2467
2"	ASTMD 2467

COUPLER



Size / D	STD
½	ASTMD 2467
¾	ASTMD 2467
1"	ASTMD 2467
1 ¼"	ASTMD 2467
1 ½"	ASTMD 2467
2"	ASTMD 2467
50 mm	ASTMD 2467

PM COUPLER



Size / D	STD
½	ASTMD 2467
¾	ASTMD 2467
1"	ASTMD 2467
40 mm	ASTMD 2467
1 ½"	ASTMD 2467
63 mm	ASTMD 2467
2	ASTMD 2467
1 ¼"	ASTMD 2467

BM COUPLER

Size / D	STD
½	ASTMD 2467
¾	ASTMD 2467
¾	ASTMD 2467
1"	ASTMD 2467

PF COUPLER

Size / D	STD
½	ASTMD 2467
¾	ASTMD 2467
1"	ASTMD 2467
1 ¼"	ASTMD 2467
1 ½"	ASTMD 2467
2"	ASTMD 2467

BF COUPLER

Size / D	STD
½	ASTMD 2467
¾	ASTMD 2467
¾	ASTMD 2467
1"	ASTMD 2467
1"	ASTMD 2467

PFM COUPLER

Size / D	STD
1 ½	ASTMD 2467
1 "	ASTMD 2467

NIPPLE

Size	STD
¾	ASTMD 2467
1"	ASTMD 2467
1 ¼	ASTMD 2467
1 ½	ASTMD 2467
2	ASTMD 2467

BUSH

Size/ D	STD
¾	ASTMD 2467
1"	ASTMD 2467
1"	ASTMD 2467
1 ¼	ASTMD 2467
1 ½	ASTMD 2467
1 ½	ASTMD 2467
2"	ASTMD 2467
2"	ASTMD 2467
2"	ASTMD 2467
2"	ASTMD 2467
200 mm	ASTMD 2467

CRANK W SOCKET

Size	STD
1/2"	ASTMD 2467
3/4"	ASTMD 2467
1"	ASTMD 2467

CRANK

Size	STD
1/2"	ASTMD 2467
3/4"	ASTMD 2467
1"	ASTMD 2467

**SOLVENT CEMENT
UPVC 717**

THREADED UNION

Size / D	STD
½	ASTMD 2467
¾	ASTMD 2467
1	ASTMD 2467
1 ½	ASTMD 2467
2	ASTMD 2467

WELDED UNION

Size / D	STD
½	ASTMD 2467
¾	ASTMD 2467
1"	ASTMD 2467
1 ½	ASTMD 2467
2"	ASTMD 2467

W-TH UNION

Size / D	STD
½	ASTMD 2467
¾	ASTMD 2467
1"	ASTMD 2467
1 ½	ASTMD 2467
2"	ASTMD 2467

FLANGE ADAPTOR

Size / D	STD
75	ASTMD 2467
90	ASTMD 2467
110	ASTMD 2467
160	ASTMD 2467

UPVC FLANGE

Size / D	STD
90	ASTMD 2467
110	ASTMD 2467
160	ASTMD 2467

END CAP

Size / D	STD
20	ASTMD 2467
½	ASTMD 2467
¾	ASTMD 2467
1"	ASTMD 2467
32	ASTMD 2467
1 ½	ASTMD 2467
2	ASTMD 2467

F END CAP

Size	STD
½	ASTMD 2467
¾	ASTMD 2467
1"	ASTMD 2467
1 ¼	ASTMD 2467
1 ½	ASTMD 2467
2"	ASTMD 2467

M END CAP

Size / D	STD
½	ASTMD 2467
¾	ASTMD 2467
1"	ASTMD 2467
1 ¼	ASTMD 2467
2	ASTMD 2467

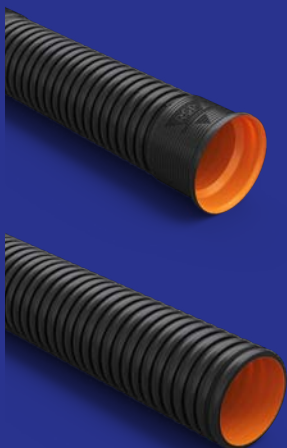
07— Double Wall Corrugated PE Pipes and Fittings

[DIN16961 /EN13476]

used where flexibility is an important factor other than strength and durability, such as in storm drains and culverts

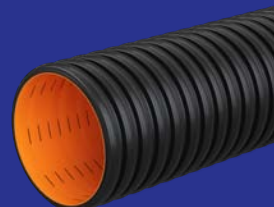


SOCKET / SPIGOT PIPE CORRUGATED



Size (D) (mm)	Stiffness SN kN/m ²
100	SN4-SN8-SN12
150	SN4-SN8-SN12
200	SN4-SN8-SN12
250	SN4-SN8-SN12
300	SN4-SN8-SN12
400	SN4-SN8-SN12
500	SN4-SN8-SN12
600	SN4-SN8-SN12
800	SN4-SN8-SN12
1000	SN4-SN8-SN12
1600	SN4-SN8-SN12

SLOTTED PIPE CORRUGATED



Size (D) (mm)	Stiffness SN kN/m ²
100	SN4-SN8-SN12
150	SN4-SN8-SN12
200	SN4-SN8-SN12
250	SN4-SN8-SN12

Corrugated Pipes and Fittings

BEND 90°



Size (D) (mm)	Stiffness SN kN/m ²
100	SN4-SN8-SN12
150	SN4-SN8-SN12
200	SN4-SN8-SN12
250	SN4-SN8-SN12
300	SN4-SN8-SN12
400	SN4-SN8-SN12
500	SN4-SN8-SN12
600	SN4-SN8-SN12
800	SN4-SN8-SN12
1000	SN4-SN8-SN12

BEND 45°



Size (D) (mm)	Stiffness SN kN/m ²
100	SN4-SN8-SN12
150	SN4-SN8-SN12
200	SN4-SN8-SN12
250	SN4-SN8-SN12
300	SN4-SN8-SN12
400	SN4-SN8-SN12
500	SN4-SN8-SN12
600	SN4-SN8-SN12
800	SN4-SN8-SN12
1000	SN4-SN8-SN12

Y-TEE



Size (D) (mm)	Stiffness SN kN/m ²
100	SN4-SN8-SN12
150	SN4-SN8-SN12
200	SN4-SN8-SN12
250	SN4-SN8-SN12
300	SN4-SN8-SN12
400	SN4-SN8-SN12
500	SN4-SN8-SN12
600	SN4-SN8-SN12

BEND 22.5°



Size (D) (mm)	Stiffness SN kN/m ²
100	SN4-SN8-SN12
150	SN4-SN8-SN12
200	SN4-SN8-SN12
250	SN4-SN8-SN12
300	SN4-SN8-SN12
400	SN4-SN8-SN12
500	SN4-SN8-SN12
600	SN4-SN8-SN12
800	SN4-SN8-SN12
1000	SN4-SN8-SN12

CROSS TEE



Size (D) (mm)	Stiffness SN kN/m ²
100	SN4-SN8-SN12
150	SN4-SN8-SN12
200	SN4-SN8-SN12
250	SN4-SN8-SN12
300	SN4-SN8-SN12
400	SN4-SN8-SN12
500	SN4-SN8-SN12
600	SN4-SN8-SN12
800	SN4-SN8-SN12
1000	SN4-SN8-SN12

EQUAL TEE



Size (D) (mm)	Stiffness SN kN/m ²
100	SN4-SN8-SN12
150	SN4-SN8-SN12
200	SN4-SN8-SN12
250	SN4-SN8-SN12
300	SN4-SN8-SN12
400	SN4-SN8-SN12
500	SN4-SN8-SN12
600	SN4-SN8-SN12
800	SN4-SN8-SN12
1000	SN4-SN8-SN12

COUPLER

Size (D) (mm)	Stiffness SN kN/m ²
100	SN4-SN8-SN12
150	SN4-SN8-SN12
200	SN4-SN8-SN12
250	SN4-SN8-SN12
300	SN4-SN8-SN12
400	SN4-SN8-SN12
500	SN4-SN8-SN12
600	SN4-SN8-SN12
800	SN4-SN8-SN12
1000	SN4-SN8-SN12

MANHOLE

SYSTEM	ECCENTRIC
MATERIAL	POLYETHYLENE
COVER SIZES	600 MM DIA
COVER LOAD	NO TRAFFIC
LENGTH	VARIABLE

CONDUITS

Size (OD) (mm)	STD
50	EN61386-24
63	EN61386-24
75	EN61386-24
90	EN61386-24
110	EN61386-24
160	EN61386-24

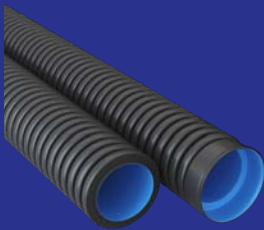
RUBBER GASKETS

10 — UPVC PIPE Conduit T.C 161A BS4607 / IEC-614-2-2

RSP Conduits has wide application in Infra/ Building application across many types



CONDUITS



Size (OD) (mm)	STD
50	EN61386-24
63	EN61386-24
75	EN61386-24
90	EN61386-24
110	EN61386-24
160	EN61386-24

TELEPHONE DUCT



SIZE mm	STD
50	T.C161A
100	T.C161A



PE 100 PIPES
DIN8074/75



UPVC PIPES
DIN8061/62



UPVC PIPES
ASTMD 1785 SCH40
ASTMD 2241

CIRCULAR - UPVC

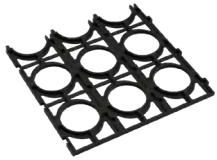


SIZE mm	STD
20	T.C161A
50	T.C161A
LD-MD-HD	
Application	Building

DUCT FITTINGS

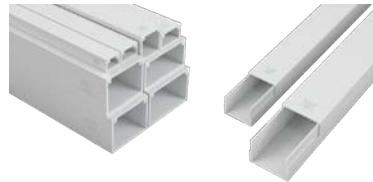


PIPES SPACER



SIZE mm
75
90
110

UPVC REGTANGULAR DUCT



SIZE		
16x16	75x50	M X M
16x25	75x75	M X M
25x28	100x50	M X M
38x25	100x70	M X M
38x38	100x100	M X M
50x50		M X M

Application Building



ELECTRICITY CHAMBERS

08 / 09 — Solid Wall UPVC

[DIN19534 / 19531]

[ES1717/2008] [ISO4435/2003]

used where flexibility is an important factor other than strength and durability, such as in storm drains and culverts

[DIN19534 / 19531]

MATERIAL	UPVC
SIZES	DIN19534 :110-630 MM DIN19531 :32-160 MM
JOINTING	RUBBER GASKET / SOLVENT
FITTINGS	INJECTED ASTMD2466

[ES1717/2008] [ISO4435/2003]

MATERIAL	UPVC
SIZES	10 - 800 MM
JOINTING	RUBBER GASKET / SOLVENT CEMENT
FITTINGS	INJECTED – ASTMD2466
EXTRA	PERFORATION / MULTILAYER



13 — RSP Valves System

RSP have wide range in water valves with capability to control, direct flow of the fluid



THREADED WELDED BALL VALVE



Size mm	Sizes inch
20	½"
25	¾"
32	1"
50	1 ½"
63	2"
75	2 ½"
90	3"
110	4"

THREADED BALL VALVE



Size mm	Sizes inch
20	½"
25	¾"
32	1"
50	1 ½"
63	2"
75	2 ½"
90	3"
110	4"

WELDED BALL VALVE



Size mm	Sizes inch
20	½"
25	¾"
32	1"
50	1 ½"
63	2"
75	2 ½"
90	3"
110	4"

BUILT IN - UNION BALL VALVE



Size mm	Sizes inch
20	½"
25	¾"
32	1"
50	1 ½"
63	2"
75	2 ½"
90	3"
110	4"

CHECK VALVE



Size mm	Sizes inch
20	½"
25	¾"
32	1"
50	1 ½"
63	2"

IRRIGATION BALL VALVE



Size mm	Sizes inch
63	2"

PPR VALVES



CHECK VALVE



Size mm	Sizes inch
20	1/2"
25	3/4"
32	1"
50	1 1/2"
63	2"
75	2 1/2"
90	3"
110	4"

CHECK VALVE WITH BRASS THREADED



Size mm	Sizes inch
20	1/2"
25	3/4"
32	1"
50	1 1/2"
63	2"
75	2 1/2"
90	3"
110	4"

WELDED HOT BALL VALVE



Size mm	Sizes inch
20	1/2"
25	3/4"
32	1"
50	1 1/2"
63	2"
75	2 1/2"
90	3"
110	4"

WELDED COLD BALL VALVE



Size mm	Sizes inch
20	1/2"
25	3/4"
32	1"
50	1 1/2"
63	2"
75	2 1/2"
90	3"
110	4"

BALL VALVE



Size mm	Sizes inch
20	1/2"
25	3/4"
32	1"
50	1 1/2"
63	2"

Building

Polypropylene System

22

DWV System | UPVC System

26

RSP Inspection Chambers System

31

RSP Fixtures

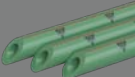
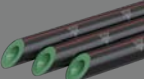
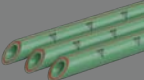
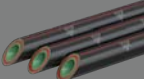
35

04 — Solid Wall PP-R Pipes & Fittings [DIN8077/8078]

PPR pipe application Industrial piping for transferring water, sanitary liquids, liquid food products, compressed air, and aggressive chemicals .



PPR PIPE

	LAYERS	Sizes MM	Pressure Bar
	1 LAYERS	20 - 160	PN 10 - 16 - 20
	2 LAYERS (UV)	20 - 110	PN 16 - 20
	3 LAYERS FIBER	20 - 110	PN 16 - 20
	4 LAYERS (UV) FIBER	20 - 110	PN 16 - 20

PPR Fittings



ELBOW 90
SIZE [20-110]mm



ELBOW 45
SIZE [20-110]mm



**REDUCING
ELBOW 90**
SIZE [25-40]mm



**F- BRASS
ELBOW W/ NUT**
SIZE [32-40]mm



**M-BRASS ELBOW
W/PLASTIC NUT**
SIZE [32-40]mm



**M- BRASS ELBOW
W/BRACKET**
SIZE [20-25]mm



**F-BRASS ELBOW
W/BRACKET**
SIZE [20-25]mm



**F- BRASS ELBOW
W/ PLASTIC NUT**
SIZE [32-40]mm



TEE
SIZE [20-110]mm



REDUCING-TEE
SIZE [25-110]mm



F- BRASS TEE
SIZE [20-25]mm



**F- BRASS TEE
W/ PLASTIC NUT**
SIZE [32-40]mm



**M- BRASS TEE
W/ PLASTIC NUT**
SIZE [32-40]mm



M- BRASS TEE
SIZE [20-32]mm



M- UNION
SIZE [20-110]mm



**M- BRASS COUPLER
W/ BRASS NUT**
SIZE [32-110]mm



**F- BRASS COUPLER
W/ BRASS NUT**
SIZE [32-110]mm



F-BRASS COUPLER
SIZE [32-110]mm



M-BRASS COUPLER
SIZE [20-110]mm



F- UNION
SIZE [20-110]mm



COUPLER
SIZE [20-110]mm



REDUCER
SIZE [25-110]mm



REDUCING-SOCKET
SIZE [25-63]mm



**SHORT CRANK
W/ SOCKET**
SIZE [20-25]mm



CRANK
SIZE [20-32]mm



**LONG CRANK
W/ SOCKET**
SIZE [20-25]mm



DOUBLE CLAMP
SIZE [20-32]mm



SINGLE CLAMP
SIZE [1/2"-1"]



FLANGE
SIZE [75-160]mm



**TEST CAP
MODEL ITALY**
SIZE [20-25]mm



TEST CAP
SIZE [20-25]mm



END CAP
SIZE [20-110]mm



**ELBOW WALL
PLATE**
SIZE [20-25]mm



WALL PLATE
SIZE [20-25]mm



**ELBOW WALL
PLATE**
SIZE [20-25]mm



**OUTSIDE
WALL-VALVE**
SIZE [20-32]mm



CONCEALED BALL VALVE COSTA
SIZE [20-25]mm



CONCEALED BALL VALVE
SIZE [20-25]mm



CONCEALED-VALVE
SIZE [20-32]mm



BRASS BALL VALVE
SIZE [20-110]mm



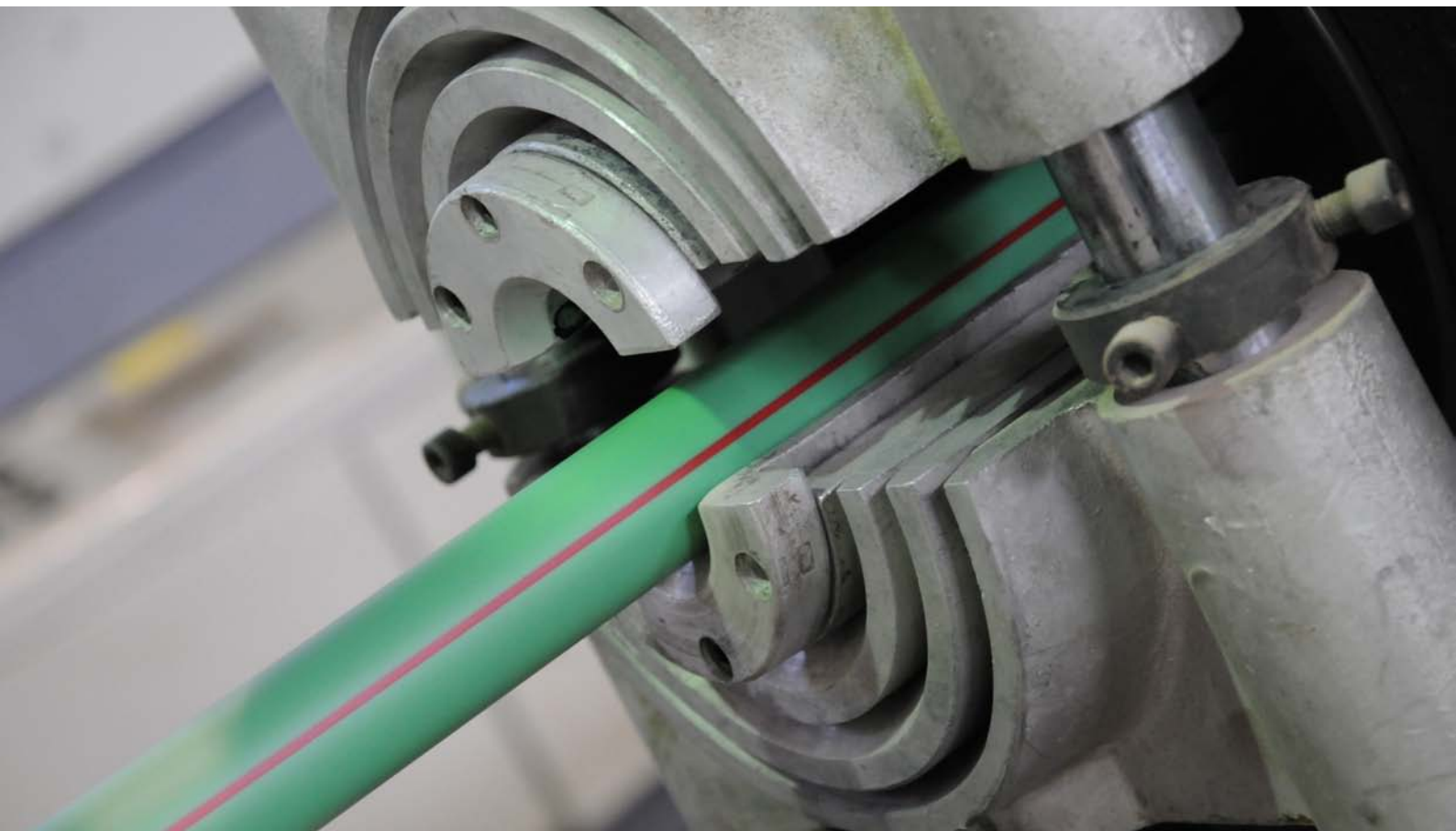
BALL VALVE COLD
SIZE [20-110]mm



BALL VALVE HOT
SIZE [20-63]mm



CHECK VALVE
SIZE [20-63]mm




11 — DWV System | UPVC

TYPE	FEATURES
PIPES	ASTMD 1785 SCH40 (1/2" - 8) ASTMD 2241 (1/2" - 8) SPECIAL STANDARD UP TO 200 MM CONNECCTION : SOLVENT CEMENT FITTING : ASTMD2466
SPECIALIST	[ROOF / FLOOR / BALONY DRAIN & CLEANOUT]
CHANNEL	Size : 127 MM W / 198 MM W Load : 1.5 TON




SYSTEM 110

Thickness	Size	PIPE
3 mm	90 mm	
4 mm	90 mm	
5 mm	90 mm	
3 mm	110 mm	
4 mm	110 mm	
5 mm	110 mm	
3 mm	160 mm	
4 mm	160 mm	
5 mm	160 mm	
4 mm	200 mm	
5 mm	200 mm	
6 mm	200 mm	


Thickness	Size	PIPE
2.6 mm	½"	
3 mm	¾"	
3.5 mm	1"	
2.5 mm	1 ½"	
3.7 mm	1 ½"	
2.7 mm	2"	
3.9 mm	2"	
2.5 mm	50 mm	
3.7 mm	50 mm	
3 mm	75 mm	
4 mm	75 mm	
5 mm	75 mm	

SYSTEM 114 / ASTM D 2241

Thickness	SDR	Size	PIPE
1.78 mm	64	4"	
2.8 mm	41	4"	
3 mm	--	4"	
3.5 mm	32.5	4"	
4 mm	--	4"	
4.4 mm	26	4"	
5 mm	--	4"	
5.4 mm	21	4"	
2.2 mm	--	6"	
2.6 mm	64	6"	
3 mm	--	6"	
4 mm	--	6"	
4.12 mm	41	6"	
5 mm	--	6"	
5.16 mm	32.5	6"	

Thickness	SDR	Size	PIPE
1.53 mm	32.5	1 ½"	
1.86 mm	26	1 ½"	
2.3 mm	21	1 ½"	
2.85 mm	17	1 ½"	
1.85 mm	32.5	2"	
2.32 mm	26	2"	
2.88 mm	21	2"	
3.56 mm	17	2"	
2.16 mm	41	3"	
2.75 mm	32.5	3"	
3 mm	--	3"	
3.43 mm	26	3"	
4 mm	--	3"	
4.25 mm	21	3"	
5 mm	--	3"	

SYSTEM ASTM D - 1785 SCH40

Thickness	Size	PIPE
2.8 mm	½"	
2.9 mm	¾"	
3.4 mm	1"	
3.6 mm	1 ¼"	
3.7 mm	1 ½"	
3.9 mm	2"	
5.5 mm	3"	
6 mm	4"	
7.1 mm	6"	
8.2 mm	200 mm	

DWV FITTINGS ASTM D 2466

SIZE (1/2" - 8") - (50- 200)MM



ELBOW 90



ELBOW 90 SWEEP



ELBOW 45



ELBOW 45 SWEEP



ELBOW 90 DOOR



ELBOW 90 SWEEP/D



F-ELBOW 90



TEE



TEE 90 SWEEP



Y- TEE



R- TEE



R-TEE SWEEP



R -Y TEE



R- TEE W/ DOOR



TEE - SWEEP W/DOOR



R- TEE SWEEP W/DOOR



TEE W/DOOR



CROSS TEE



CROSS TEE SWEEP



TEE 45 CROSS

DWV FITTINGS ASTM D 2466

SIZE (1/2" - 8") - (50- 200)MM



R-TEE 45
CROSS



DRAINAGE
COUPLING



REPAIR, EXTENSION
COUPLING



CONNECTOR



CLEANOUT



DRAIN TRAP
EXTENSION JOINT



F- THREADED
COUPLING



COUPLING



R-COUPLING



BUSH



P-TRAP



END CAP

DWV PLUMBING ACCESSORIES

SIZE (50-110)MM



VENT



TRIANGULAR
ROOF DRAIN



COUPLING
ROOF DRAIN



MULTI FLOOR TRAP
W/ SEPARATOR



MULTI FLOOR TRAP
110 * 125 MM



MULTI FLOOR TRAP
W/ ELBOW



MULTI FLOOR TRAP
ITALIAN MODEL



LOWER MULTI
FLOOR DRAIN TRAP
7.5 CM HEIGHT



BALCONY DRAIN
TRAP



VERTICAL DRAIN
TRAP



DRAIN TRAP
EXTENSION JOINT



SOLVENT CEMENT
UPVC 905

DWV TRENCH CHANNEL

SIZE (110, 160)MM



HALF DRAINAGE
110MM-160MM
160MM-110MM/75MM



R-L CORNER CHANNEL
110MM-160MM



INLET / OUTLET
EXTENSION
110*75 MM
160*110MM



CHANNEL END CAP
110MM,160MM



OUTLET COUPLER
110*75 MM

12 — RSP Inspection Chambers



RECTANGULAR INSPECTION CHAMBER W / TRAP

The basin has a water seal to prevent foul odors of the sewer reaching the surface while Drainage process.

MATERIAL	PP
SIZES	20 , 55 CM
COVER LOAD	3 TON
COLORS	MANY COLORS
EXTENSION HEIGHT	30 , 55 CM



MATERIAL - PP



SIZE CM	OUTLETS
20X20X20	75-110MM , 1.5",2"
30X30X30	75-160MM, 1.5",2"
40X40X40	75-200MM, 2"
55X55X55	75-315MM

COVER LOAD

1.5 TON -3TON
LD - HD



SIZE CM
20X20X20
30X30X30
40X40X40
55X55X55

EXTENSION HEIGHT

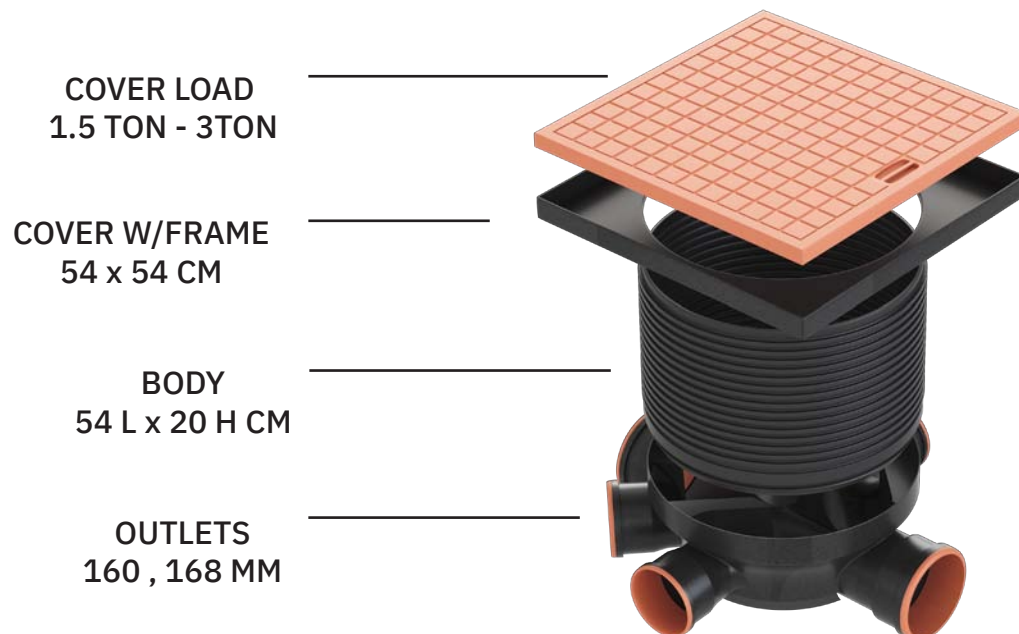


SIZE CM	HEIGHT
20X20X20	122 MM
30X30X30	130 MM
40X40X40	128 MM
55X55X55	320 MM

PP- CIRCULAR INSPECTION CHAMBER

is a basin in the ground which receives piped wastewater from inside your home before it is emptied into the wastewater network.

MATERIAL	PP
CHAMBER DIMENSION SIZES	54 x 54 x 53CM
COVER LOAD	1.5 TON
CLIENT LOGO	UPON REQUEST
EXTENSION HEIGHT	20 CM
OUTLET SIZES	160 / 110MM – 168 / 114MM



PE - CORRUGATED INSPECTION CHAMBER



SYSTEM	ECCENTRIC
MATERIAL	POLYETHYLENE
COVER SIZES	600 MM DIA
COVER LOAD	NO TRAFFIC
LENGTH	VARIABLE

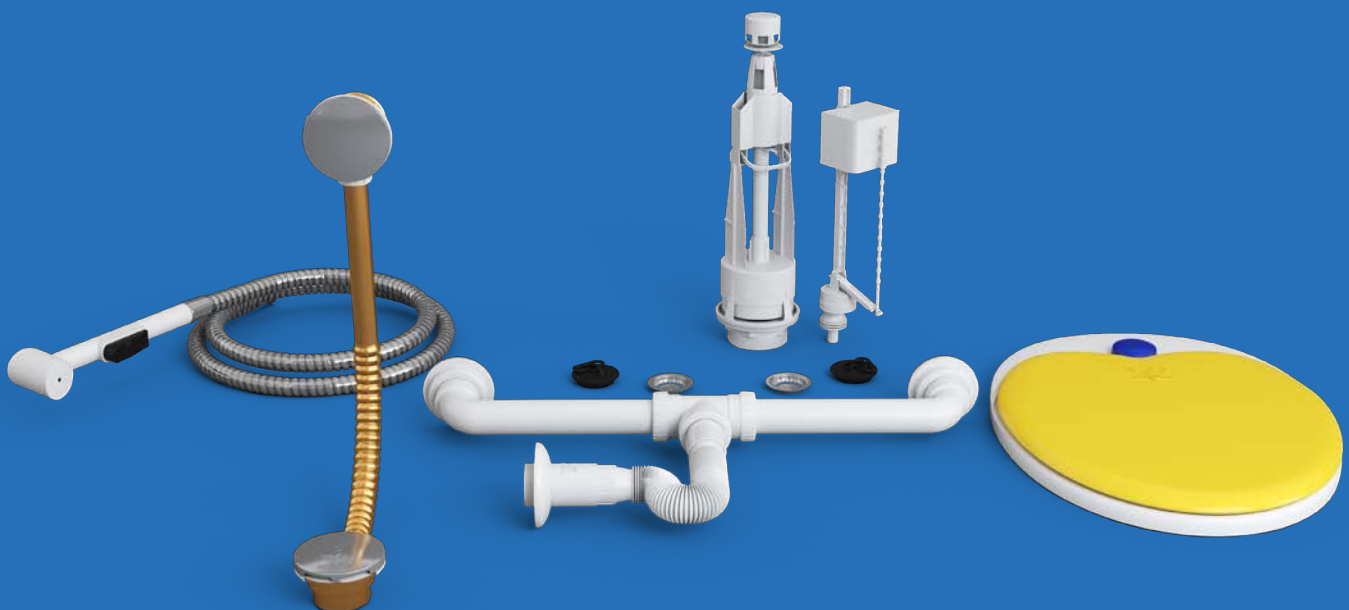
PE - FABRICATED INSPECTION CHAMBER



SYSTEM	As per client Design
--------	----------------------

16 — RSP Fixtures

TYPES	FEATRURES
TOILET SEATS	W ALUMINUM / NICKEL FASTENERS DOLPHIN SEATS
HOSE BIDETS	ITALIAN / GERMAN
FLUSH MECHANISM	W / BRASS THREADED W / PLASTIC THREADED
WASTE FLEXIBLE SET	SINGLE / DOUBLE FOR BATHROOM & KITCHEN SIPHONE





SHORT -BRASS BALL TAP 1/2"-3/4"



LONG -BRASS BALL TAP 1/2"-3/4"



SHORT - PLASTIC BALL TAP 1/2"-3/4"



SHORT - PLASTIC BALL TAP 1/2"-3/4"



Y FLEXIBLE 2"



COMPLETE FLEXIBLE WASTE PIPE 1 1/2"-2"



FLEXIBLE PLASTIC PIPE 1 1/4"-1 1/2"



DOUBLE SIPHON FOR KITCHEN 3"



TOILET SEAT FLEXIBLE CONNECTOR 25-54 CM



WASTE DRAINER SET 1 1/2"



FLEXIBLE SIPHON-2"



FLEXIBLE CONNECTOR 15 CM



LONG COUPLER 110/54 CM 110/40 CM



SHORT COUPLER 15 CM



FLEXIBLE CONNECTOR 25CM



TOILET SEAT FLEXIBLE CONNECTOR 30/45 CM



BATHTUB POP-UP WASTE W/DRAIN



BRASS BATHTUB



BATHTUB POP UP



BATHTUB



BATHTUB POP UP
WASTE W/DRAIN



FOOT BATHTUB



BRASS EXTENSION



BRASS EXTENSION



PLASTIC FLUSH
MECHANISM BRASS
THREADED



PLASTIC FLUSH
MECHANISM PLASTIC
THREADED



TOILET SEAT



DOLPHIN TOILET SEAT



FASTENERS
NICKEL ALUMINIUM
BRASS

GERMAN



SHATTAF

ITALIAN

DWV Plumbing Accessories



PLASTIC FD STRAINER
15,20 CM L

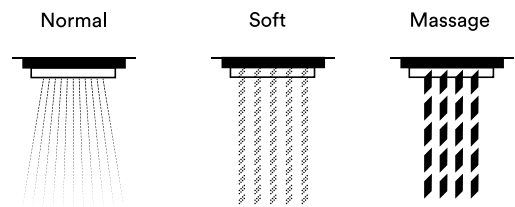


ST.ST FD STRAINER
15 , 20 CM



FD STRAINER
W/COVER 15 CM

Hand Shower



15 — Irrigation System Pipes & Fittings

Drip Irrigation method, Drop by Drop, water is distributed to the active root zone of plants. This method, if managed properly, might be the most water-supply-efficient way of irrigation.

System	Value
SADDLES SYSTEM #14	25-250 MM – PN16
DRIPPER	Plain - 12-16-20 MM INLINE Drip- 16 MM/ 2-4 L/H
Related Systems	Pressure System #02 Valves System #13 Well Pipes System #06



Compression Fittings

COUPLER



Size (mm)

Ø20

Ø25

Ø32

Ø40

Ø50

Ø63

REDUCER COUPLER



Size
(d) (mm)

φ20 * φ16 * φ20

φ25 * φ20 * φ25

φ32 * φ20 * φ32

φ32 * φ25 * φ32

φ40 * φ25 * φ40

φ40 * φ32 * φ40

φ50 * φ25 * φ50

φ50 * φ32 * φ50

φ50 * φ40 * φ50

φ63 * φ25 * φ63

φ63 * φ32 * φ63

φ63 * φ40 * φ63

φ63 * φ50 * φ63

REDUCER ELBOW



Size
(d) (mm)

φ20 * φ16 * φ20

φ25 * φ20 * φ25

φ32 * φ20 * φ32

φ32 * φ25 * φ32

φ40 * φ25 * φ40

φ40 * φ32 * φ40

φ50 * φ25 * φ50

φ50 * φ32 * φ50

φ50 * φ40 * φ50

φ63 * φ25 * φ63

φ63 * φ32 * φ63

φ63 * φ40 * φ63

φ63 * φ50 * φ63

EQUAL ELBOW



Size
(d) (mm)

Ø20 X Ø20

Ø25 X Ø25

Ø32 X Ø32

Ø40 X Ø40

Ø50 X Ø50

Ø63 X Ø63

EQUAL TEE



Size
(d) (mm)

Ø20 x Ø20 x Ø20

Ø25 x Ø25 x Ø25

Ø32 x Ø32 x Ø32

Ø40 x Ø40 x Ø40

Ø50 x Ø50 x Ø50

Ø63 x Ø63 x Ø63

REDUCER TEE



Size
(d) (mm)

φ20 * φ16 * φ20

φ25 * φ20 * φ25

φ32 * φ20 * φ32

φ32 * φ25 * φ32

φ40 * φ25 * φ40

φ40 * φ32 * φ40

φ50 * φ25 * φ50

φ50 * φ32 * φ50

φ50 * φ40 * φ50

φ63 * φ25 * φ63

φ63 * φ32 * φ63

φ63 * φ40 * φ63

φ63 * φ50 * φ63

COUPLER FEMALE W BRASS INSERTS



Size (mm x inch)
Ø32 x 1"
Ø40 x 1 ¼"
Ø50 x 1 ½"
Ø63 x 2"

COUPLER MALE WITH BRASS INSERTS



Size (mm x inch)
Ø32 x 1"
Ø40 x 1 ¼"
Ø50 x 1 ½"
Ø63 x 2"

ELBOW FEMALE WITH BRASS THREADED INSERTS



Size (mm x inch)
Ø32 x 1"
Ø40 x 1 ¼"
Ø50 x 1 ½"
Ø63 x 2"

ELBOW MALE WITH BRASS THREADED INSERTS



Size (mm x inch)
Ø32 x 1"
Ø40 x 1 ¼"
Ø50 x 1 ½"
Ø63 x 2"

TEE FEMALE WITH BRASS THREADED INSERTS



Size (mm x inch)
Ø32 x 1"
Ø40 x 1 ¼"
Ø50 x 1 ½"
Ø63 x 2"

TEE MALE WITH BRASS THREADED INSERTS



Size (mm x inch)
Ø32 x 1"
Ø40 x 1 ¼"
Ø50 x 1 ½"
Ø63 x 2"

Saddle

TYPES	FEATURES
MATERIAL	PP
SIZES	25 – 250 MM
PRESSURE	16 BAR
TYPES	SINGLE / DOUBLE
THREAD TYPE	PLASTIC / BRASS



Dimension Table

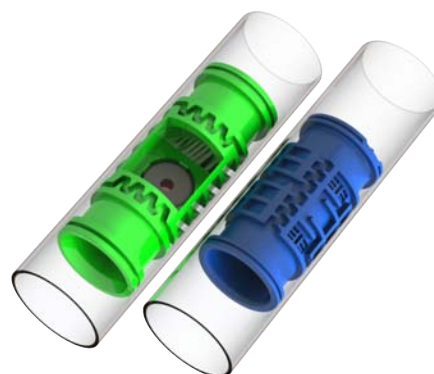
Type - Without Dripping

OD mm	Wall Thickness mm	Material
12	0.7	PE100
	0.8	PE100
	1	PE100
16	0.9	PE100
	1	PE100
	1.1	PE100
20	1	PE100
	1.2	PE100
	1.5	PE100
	1.8	PE100



Type 2 - Inline Dripping

OD mm	Wall Thickness mm	Dripping Type	Dripper Distance cm	Material	Flow- Rate L/H
16	0.9	Inline Drip	20-30-40-50 CM	PE100	2 -4
	1	Inline Drip	20-30-40-50 CM	PE100	2-4
	1.1	Inline Drip	20-30-40-50 CM	PE100	2-4



Well Pipes



Diameter mm	Thickness mm	
	10 Bar	16 Bar
50	2.4	3.7
63	3	4.7
75	3.6	5.6
90	4.3	6.7
110	5.3	8.2
125	6	9.3
140	6.7	10.4
160	7.7	11.9
200	9.6	14.9
225	10.8	16.7
250	11.9	18.6
280	13.4	20.8
315	15	23.4

8K + DIFFERENT PRODUCTS



01 – HDPE
[DIN8074/8075]



02 / 03 – UPVC
[DIN8061/8062 - ES848]



04 – PP-R
[DIN8077/8078]



05 – CPVC
[ASTM F441]



06 – WELL PIPES
[DIN4925/BS3505]



07 – DWC PIPES
[DIN16961 /EN13476]



**08 / 09 – Solid Wall UPVC
[DIN19534 / 19531]**



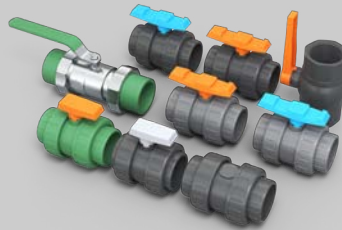
**10 – UPVC Conduit T.C 161A
[BS4607-IEC-614-2-2]**



**11 – DWV-UPVC
[ASTM D 1785 SH40]**



12 – Inspection Chambers



13 – Valves System



14 – Application System



15 – Irrigation System



16 – Fixtures



28 Gamal Abd El-Nasir,
1st Tourist Zone 6th of October,
Giza - Egypt

TEL +2 02 38211524
TEL +2 02 3821 1305 / 6
FAX +2 02 3821 1525
MOB +2 01019886000



19886
RSP.EG